

# Muswell Hill Primary School

## Our School Structure 2014/15

Joy + Discovery + Diversity

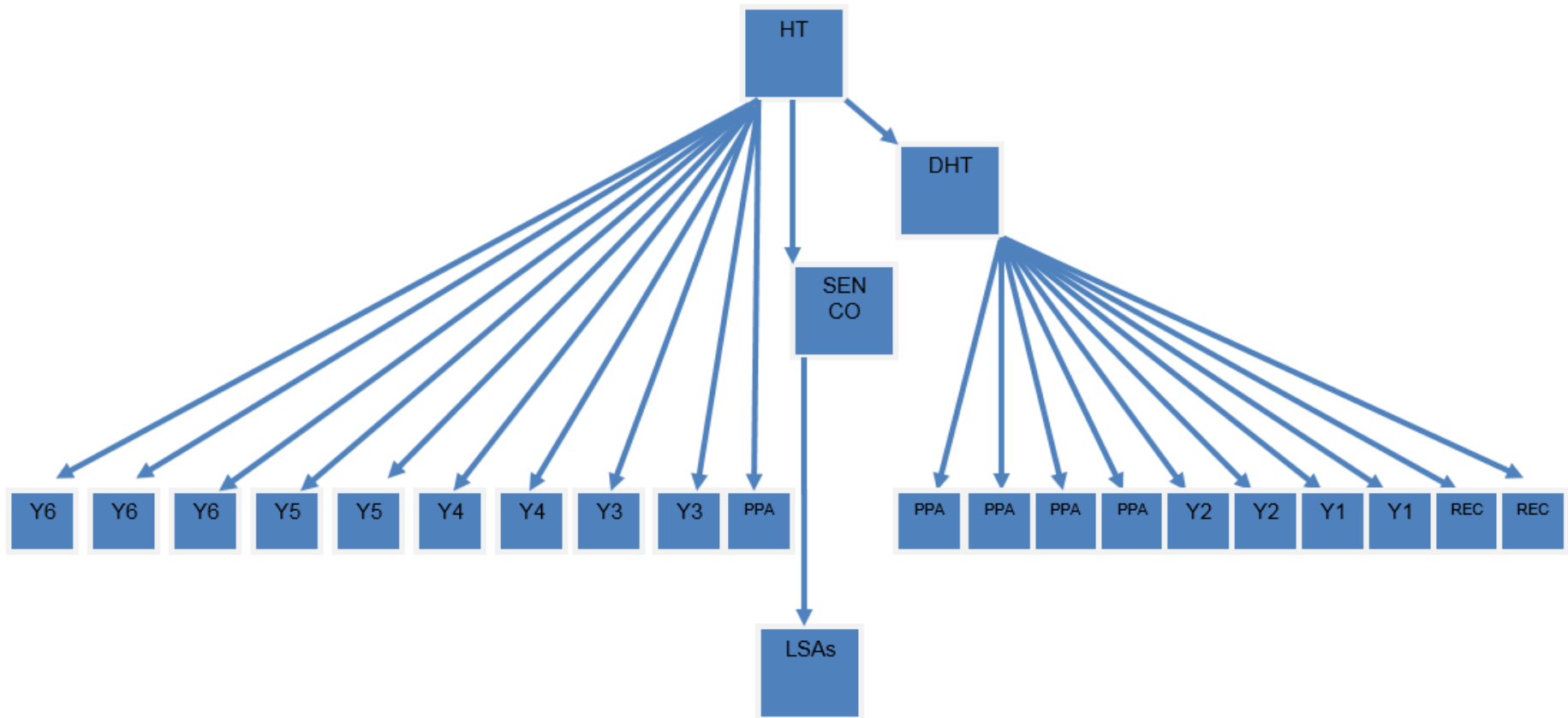




# Staffing at Muswell Hill

- 1) Led a staff restructure and reorganisational change
- 2) The aim was to retain our excellent staff
- 3) The aim was to distribute leadership
- 4) The aim was to use part of our funding to develop staff.

# Current Structure



# What Changes Have Been Made?

- 1) Appointment of 3 Assistant Headteachers
- 2) Each will have control of a phase in the school
- 3) Each will formally line-manage staff in their phase.
- 4) The phases:

Reception and Year 1		Year 2 and 3		Year 4, 5 and 6		
Assistant Headteacher		Assistant Headteacher		Assistant Headteacher		
Ruby	Amber	Gold	Emerald	Sapphire	Cobalt	Amethyst
Red	Orange	Yellow	Green	Blue	Indigo	Violet

# What Changes Have Been Made?

## Why?

- 1) Retention of staff
- 2) Designated go-to leader for all **children**
- 3) Designated go-to leader for all **parents**
- 4) Senior Leadership Team right across the phases
- 5) Designated leader who knows the learning of each child
- 6) Designated leader for **staff** to support: Development, planning, marking and general concerns
- 7) Monitoring led by a designated leader
- 8) Managing transition
- 9) Helen, Gillian teach but I need to too.

Reception and Year 1		Year 2 and 3		Year 4, 5 and 6		
Assistant Headteacher		Assistant Headteacher		Assistant Headteacher		
Ruby	Amber	Gold	Emerald	Sapphire	Cobalt	Amethyst
Red	Orange	Yellow	Green	Blue	Indigo	Violet

# What Changes Have Been Made?

## What is the role?

- 1) It's a **teaching** and **leadership** role
- 2) Fully non-class based from September 2014 – **no changes until September 2014**
- 3) Covering PPA time to gain consistency – a designated leader who knows the learning and has been involved in the planning
- 4) Impacting on Maths and Literacy and taking small groups
- 5) Supporting marking, planning, team-teaching and working with additional adults
- 6) Leading pupil progress meetings
- 7) Performance managing staff

Reception and Year 1		Year 2 and 3		Year 4, 5 and 6		
Assistant Headteacher		Assistant Headteacher		Assistant Headteacher		
Ruby	Amber	Gold	Emerald	Sapphire	Cobalt	Amethyst
Red	Orange	Yellow	Green	Blue	Indigo	Violet

# What Changes Have Been Made?

## When are the roles changing?

- 1) The Assistant Headteachers take post from 22.4.14.
- 2) AHTs will **not** be removed from their classes until September 2014
- 3) The Summer Term 2014 will be used to begin roles and prepare for the changes in September.

Reception and Year 1		Year 2 and 3		Year 4, 5 and 6		
Assistant Headteacher		Assistant Headteacher		Assistant Headteacher		
Ruby	Amber	Gold	Emerald	Sapphire	Cobalt	Amethyst
Red	Orange	Yellow	Green	Blue	Indigo	Violet

# What Changes Have Been Made?

## Who are the Assistant Headteachers?

Year 4, 5 and 6: David Howes

Year 2 and 3: Liz McMullen

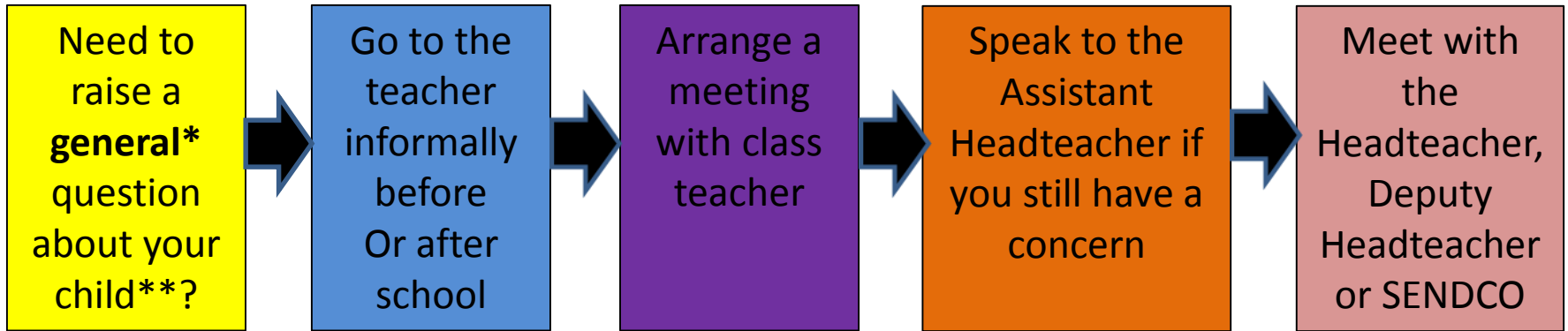
Reception and Year 1: Rosie O'Donnell

Reception and Year 1		Year 2 and 3		Year 4, 5 and 6		
Assistant Headteacher		Assistant Headteacher		Assistant Headteacher		
Ruby	Amber	Gold	Emerald	Sapphire	Cobalt	Amethyst
Red	Orange	Yellow	Green	Blue	Indigo	Violet



# What Changes Have Been Made?

## How does this change things?



- \*If there is a question regarding SEN please speak with the teacher, Assistant Headteacher and SENDCO.
- \*\*If there is a question about the running of the school generally please speak to the Headteacher/Deputy Headteacher.

Reception and Year 1		Year 2 and 3		Year 4, 5 and 6		
Assistant Headteacher		Assistant Headteacher		Assistant Headteacher		
Ruby	Amber	Gold	Emerald	Sapphire	Cobalt	Amethyst
Red	Orange	Yellow	Green	Blue	Indigo	Violet

# New Structure

